

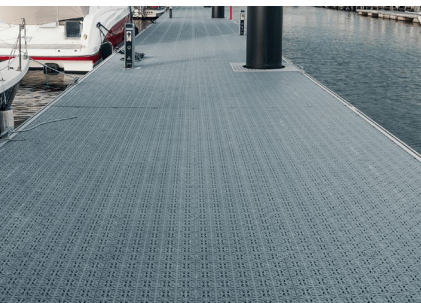
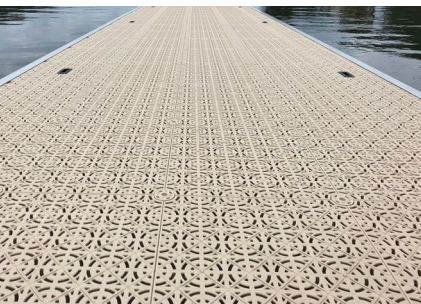


PORALU
MARINE

— WEARTH Group —

ECOSTYLE DECKING

NAUTIC FINISH



CHARACTERISTICS

- Polypropylene tiles
- Patented fixation
- 500mm x 600mm x 50mm
- 2.5 Kg

ECONOMICAL

- 10-year warranty
- 35 years of experience
- No maintenance

PRACTICAL

- Easy assembly
- One key

BENEFITS

- Rupture 400daN on point load
- UV-stabilised
- Fireproof available

ECOLOGICAL

- 100% recyclable
- Lets sunlight pass



**PORALU
MARINE**

— WEARTH Group —

ECOSTYLE DECKING

NAUTIC FINISH

EASY DISASSEMBLY



contact@poralu.com
www.poralu.com